

What Items are Accepted for Disposal

Bagged Household Trash

What: Bagged household trash.

Where: All six (6) Convenience Collection Centers.

How: In bags or trash cans.

What Items are Accepted for Recycling

Plastic Bottles

What: Plastic bottles with a neck, both clear and colored, including water bottles, milk jugs, and personal care products. Just check for the neck!

Where: All six (6) Convenience Collection Centers.

How: Discard cap. Empty and rinse.

Not Accepted: Grocery bags, food wrap, car oil bottles, plastic toys, pool chemical containers.



Glass Bottles

What: Food and beverage bottles and jars—clear, green or brown.

Where: All six (6) Convenience Collection Centers.

How: Empty and rinse. Remove lids. Leave on labels. No broken glass.

Not Accepted: Pyrex, light bulbs, window glass and mirrors.



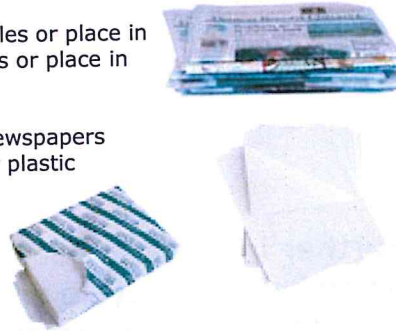
Paper and Newspaper

What: Paper and newspapers and any inserts delivered with the newspaper.

Where: All six (6) Convenience Collection Centers.

How: Tie in bundles or place in brown paper bags or place in recycling bin.

Not Accepted: Newspapers in plastic bags or plastic grocery bags.

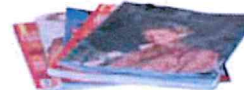


Magazines, Catalogs and Phone Books

What: All magazines, glossy mail order catalogs, and phone books.

Where: All six (6) Convenience Collection Centers.

Not Accepted: Magazines and catalogs placed in plastic bags or plastic grocery bags.



Metal Cans

What: Steel or aluminum containers such as soup, pet food, soda, vegetable, fruit, and pie plates.

Where: All six (6) Convenience Collection Centers.

How: Empty and rinse. Do not flatten. Leave on labels and lids.

Not Accepted: Scrap metal such as toasters, pots, frying pans, coat hangers, etc.



Electronics

What: Electronic devices such as televisions, computers, radios, VCRs, CD players, phones, etc.

Where: Anson County Landfill.



Corrugated Cardboard

What: Doubled-walled cardboard and shipping cartons.

Where: All six (6) Convenience Collection Centers.

How: Cardboard must be clean. Flatten empty carton.



Appliances (White Goods)

What: Large appliances such as clothes washing machines and dryers, dish washers, stoves and ovens, refrigerators, and microwaves. Small appliances such as toasters, blenders, etc.

Where: Anson County Landfill.

Additional Items Accepted at the Anson County Landfill

Used Motor and Transmission Oil
Yard Waste
Furniture
Used Tires
Used Batteries